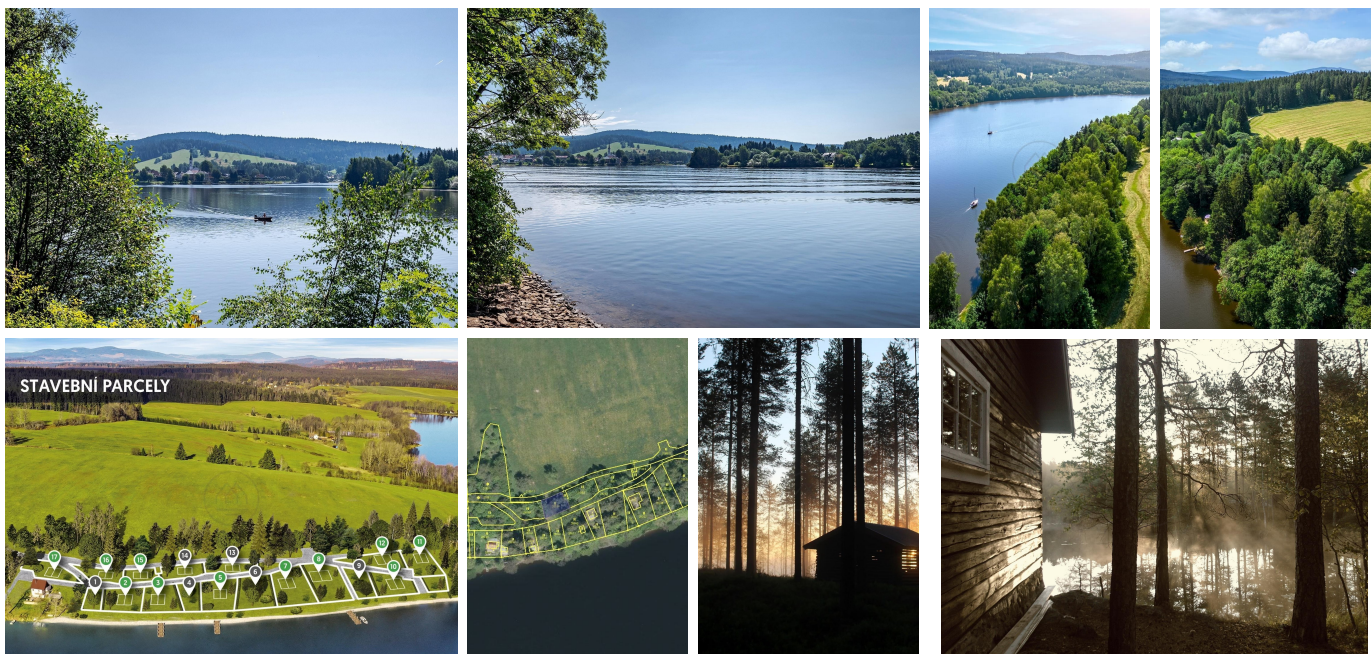




LIPNO REAL  
Exclusive real estate around lake  
Lipno

+420 601 005 006  
[info@lipno-real.com](mailto:info@lipno-real.com)  
[www.lipno-real.com](http://www.lipno-real.com)

# Building plot No. 15 in the second row by the water - LIPNO LOGGIA



**Frymburk**  
Location

**235 950 EUR**  
Price with 21% vat.

## Description

We present this exclusive building plot No. 15 in the second row, right by the banks of the Lipno in the Frymburká pole location.

The land is part of the Lipno Loggia project - It is a completely unique luxury location "amazing places" by the water, focused on plenty of privacy in the middle of greenery and nature, with a view of Lipno, forests and partly also the center of Frymburk. The plots are suitable for recreational facilities, surrounded by mature trees with direct access to the water. The advantage is complete peace, southern orientation and the possibility of using a partial slope.

Reconstruction of the existing access road and construction of new infrastructure, including communication, own water wells and electricity connection, are now underway. networks. After booking the land, we provide a non-binding architectural study for a holiday home that is adapted to similar conditions, meets the most

## Real estate specialist



**Ing. Marek Ertl**

[m.ertl@group-df.cz](mailto:m.ertl@group-df.cz)

+420 601 005 006





demanding requirements and provides an extraordinary environment for recreation for your family or potential customers. The type and shape of the house is entirely under the direction of the future owner of the land and is subject to its own permit procedure.

According to the spatial plan, the plots are classified as Family Recreation Areas (RI)

Main use: territory for recreational accommodation in cottages, structures for family recreation, cottages, cottages, land for related transport and technical infrastructure.

Construction in development areas will always be handled with a limit of max. 1 above-ground floor plus attic, the proportion of built-up and other reinforced areas incapable of absorbing rainwater can amount to max. 40% of the land area.

The price of the land is incl. 21% VAT.

Around Frymburk, all Lipno activities are available, cycling, hiking, fishing, water sports, skating, skiing, cross-country skiing and more. In the surroundings you will find everything you need for recreation, shops, restaurants, cycle paths, slopes and wellness.

Take advantage of the unique opportunity to reserve a piece of land in an exceptional location right by the shore at an affordable price and realize your plan here, which will be appreciated for generations.

We exclusively offer year-round maintenance and rental management of the new property during your absence. We provide complete legal services and support during construction.

[www.lipno-logy.cz](http://www.lipno-logy.cz)

Contact an investment specialist in the Lipno area for more information, or stop by for a non-binding inspection.

## Parameters

Reference number:	<b>648657</b>	Energy Class:	<b>G - Extremely inefficient</b>
Type:	<b>Plot, Construction housing</b>	Parking:	<b>Not specified</b>
Ownership:	<b>Personal</b>		
Price with 21% vat. :	<b>5 670 000CZK</b>		
Address:	<b>Frymburk</b>		
Electricity:	<b>Not specified</b>		

## Map



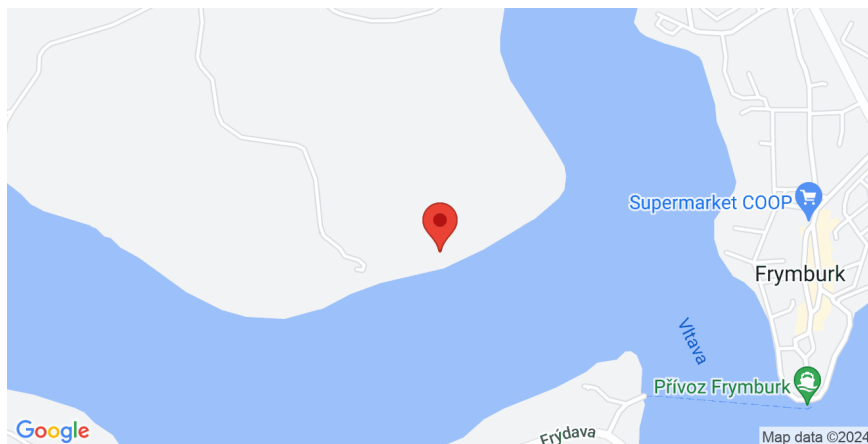


LIPNO REAL  
Exclusive real estate around lake  
Lipno

+420 601 005 006

[info@lipno-real.com](mailto:info@lipno-real.com)

[www.lipno-real.com](http://www.lipno-real.com)



All published data contained in this advertisement are for informational purposes only and do not constitute an offer within the meaning of § 1731 or § 1732 of the Civil Code, nor is it a public promise pursuant to § 1733 of the Civil Code. This offer does not entitle anyone to conclude a contract. Lipno Real s.r.o. it mediates data (information) acquired in good faith from the owner of the immovable property and for this reason is not responsible for its completeness, accuracy and accuracy. At the same time, it is not authorized to conclude any contracts connected with the sale of real estate on behalf of the owner of the real estate.



LIPNO REAL  
Exclusive real estate around lake  
Lipno

+420 601 005 006

[info@lipno-real.com](mailto:info@lipno-real.com)

[www.lipno-real.com](http://www.lipno-real.com)

Lipno Real s.r.o.  
C 12437 vedená u Krajského soudu v Českých Budějovicích  
Sídlo: Přístav 71, 382 78 Lipno nad Vltavou  
IČO 26077191