

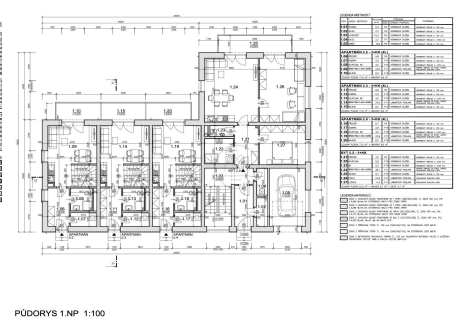
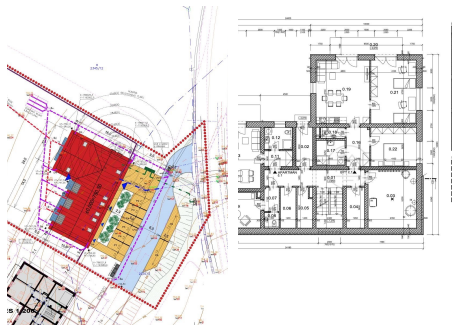
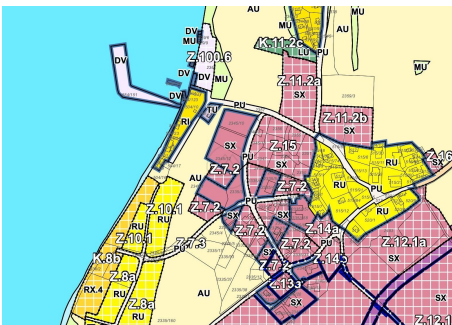
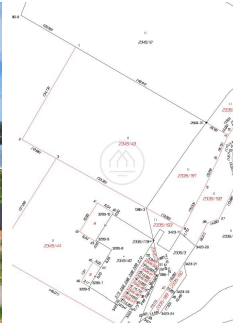


LIPNO REAL
Exclusive real estate around lake
Lipno

+420 601 005 006

info@lipno-real.com
www.lipno-real.com

Luxury Plot with Breathtaking Panoramic Water Views - 2,278 m², Kovářov



Frymburk

Location

2278 m²

Plot size

1 120 000 EUR

Price with vat.

Description

Presenting one of the most attractive building plots at Lake Lipno, offering unrivaled views of the expansive water surface and breathtaking sunsets.

This exceptional plot is located in the prestigious Kovářov area, in the front row of a newly emerging residential development. It is a unique and prominent location with outstanding potential for the construction of a luxury project. Thanks to its elevated position on a slope, the plot offers breathtaking panoramic views of the widest water surface in the Czech Republic, the surrounding nature, and the distant peaks of the Šumava mountains.

The sale includes a valid building permit for the construction of an apartment house with 7 units and a private wellness area. The project is ready for immediate realization, with the possibility to adjust the design according to your preferences.

Real estate specialist



Ing. Marek Ertl

m.ertl@group-df.cz

+420 601 005 006





An added advantage is the availability of utility connections – electricity, water, and sewage are all easily accessible near the plot. Its west-facing orientation and gentle slope ensure all-day sunlight and maximum enjoyment of the stunning views.

According to the zoning plan, the plot falls into the category of Mixed Residential – an area for housing and civic amenities, with the potential for recreational accommodation. The buildable area may cover up to 50% of the plot, with a height limit of 2 stories plus a residential attic.

Within a short drive, you'll find all necessary civic amenities in the nearby town of Frymburk – including shops, restaurants, a beach, wellness hotel, grocery stores, ATM, bike paths, and, most importantly, pristine nature. Everything you need for both living and leisure is right here.

□

□ Highlights:

- Exceptional location – one of the finest spots at Lipno with wide, open views
- Valid building permit for a 7-unit apartment house with private wellness
- Utility connections (electricity, water, sewage) within close reach
- Generous plot size, suitable for private living or investment development
- West-facing orientation for optimal sun and unforgettable sunsets

□

Secure this unique plot while it is still available – your vision of living or investing at Lipno can become reality here. You're welcome to arrange a non-binding personal viewing.

We also offer support with financing, permitting, construction, and management of short-term rentals.

Parameters

Reference number:	715995	Sewerage:	Municipal
Type:	Plot, Construction housing	Water:	Water supply
		Plot size:	2278 m²
Price with vat. :	1 120 000 EUR		
Address:	Frymburk		
Electricity:	On the border		

Map





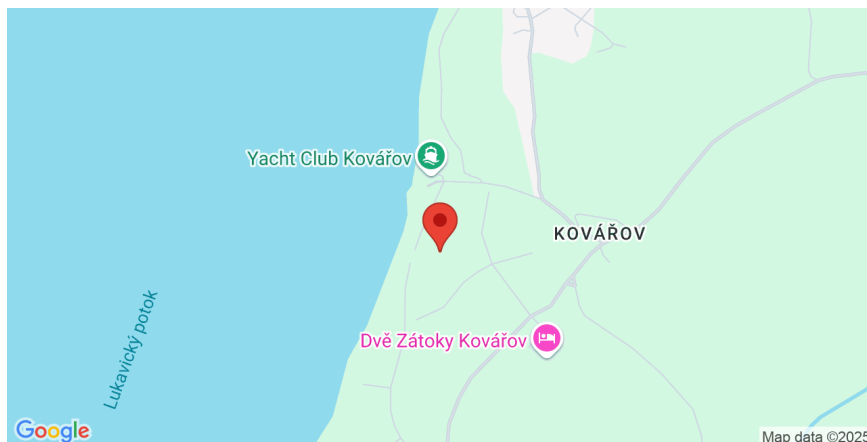
LIPNO REAL

Exclusive real estate around lake
Lipno

+420 601 005 006

info@lipno-real.com

www.lipno-real.com



All published data contained in this advertisement are for informational purposes only and do not constitute an offer within the meaning of § 1731 or § 1732 of the Civil Code, nor is it a public promise pursuant to § 1733 of the Civil Code. This offer does not entitle anyone to conclude a contract. Lipno Real s.r.o. it mediates data (information) acquired in good faith from the owner of the immovable property and for this reason is not responsible for its completeness, accuracy and accuracy. At the same time, it is not authorized to conclude any contracts connected with the sale of real estate on behalf of the owner of the real estate.



LIPNO REAL

Exclusive real estate around lake
Lipno

+420 601 005 006

info@lipno-real.com

www.lipno-real.com

Lipno Real s.r.o.

C 12437 vedená u Krajského soudu v Českých Budějovicích

Sídlo: Přístav 71, 382 78 Lipno nad Vltavou

IČO 26077191